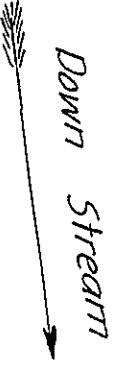
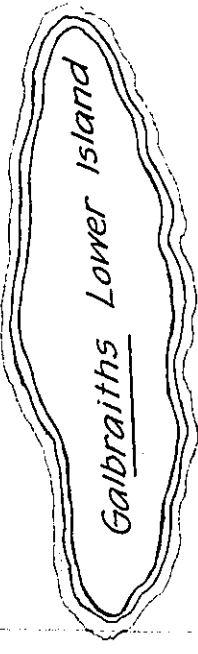
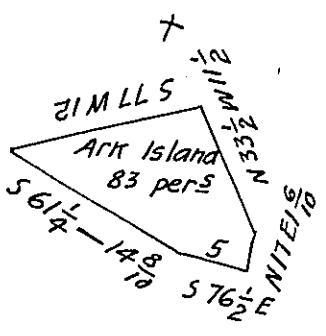


York Shore



Lancaster Shore Lands of John Holdeman

The above described Island. Situate in the River Susquehanna in the township of Donegal and County of Lancaster called "Ark Island" being about forty perches from the upper end of Galbraiths lower Island and opposite the lands of John Holdeman on the Lancaster Shore, Containing Eighty three perches (Neat.) Surveyed August 19th 1809 in pursuance of a Warrant dated the 17th of November Anno Domini One Thousand Eight hundred & Eightth Granted to Jonathan Hough Jn^o Leman & Jacob Bowers. August the 30th A. D. 1810.
 To Andrew Porter Esq^r p^r
 Surveyor Gen^l of Pennsylv^a Jacob Hibshman D.S.
 * Say the 7th day of September 1808.

James Mc Cullouch. —

IN TESTIMONY that the above is a copy of the original remaining on file in the Department of Internal Affairs of Pennsylvania, made conformably to an Act of Assembly approved the 16th day of February, 1833, I have hereunto set my Hand and caused the Seal of said Department to be affixed at Harrisburg, this nineteenth day of May 1905.

Joseph B. Brown
 Secretary of Internal Affairs.